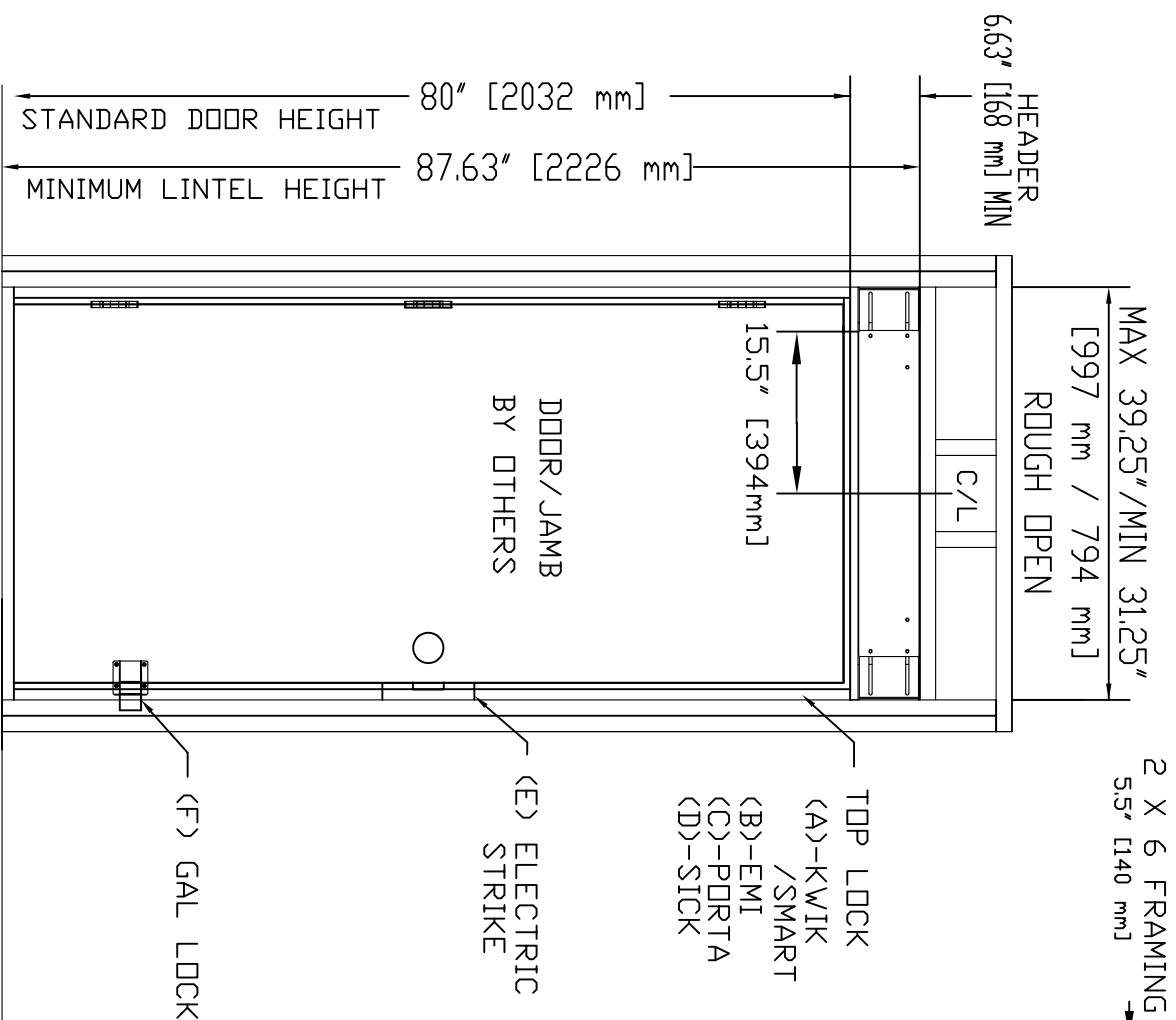
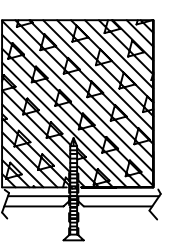
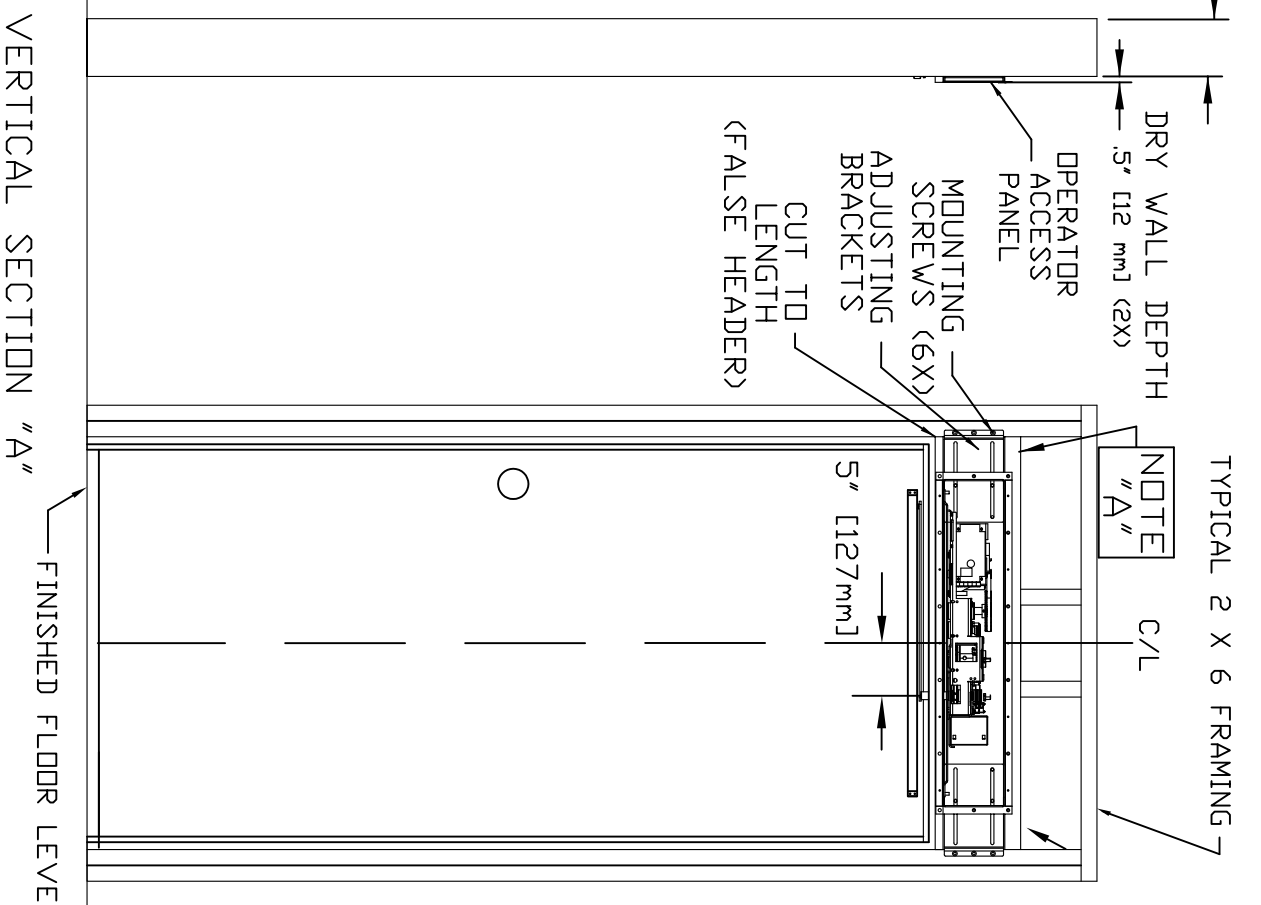


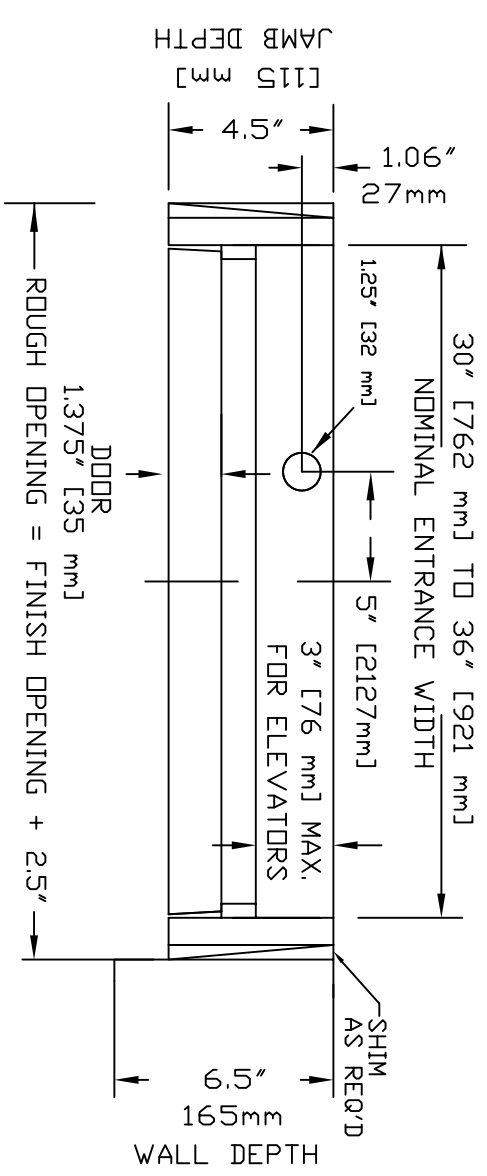
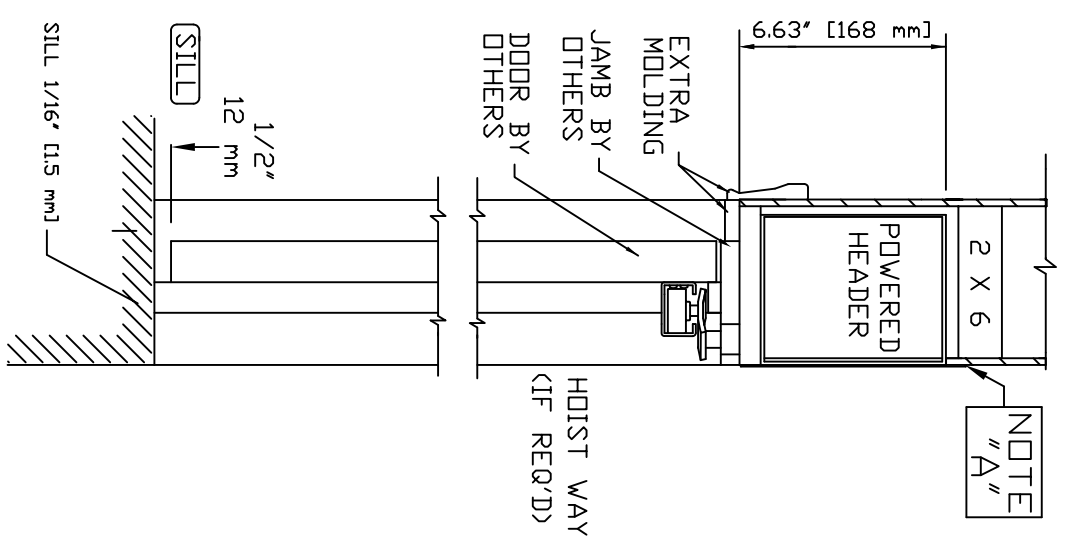
SWING-OUT VIEW  
(LANDING)



SWING-IN VIEW  
(HOIST WAY)



ADJUSTABLE BRACKET WALL ATTACHMENT (6X) #8 X 1.5 FH SCREWS (ADJUST TO CENTER)



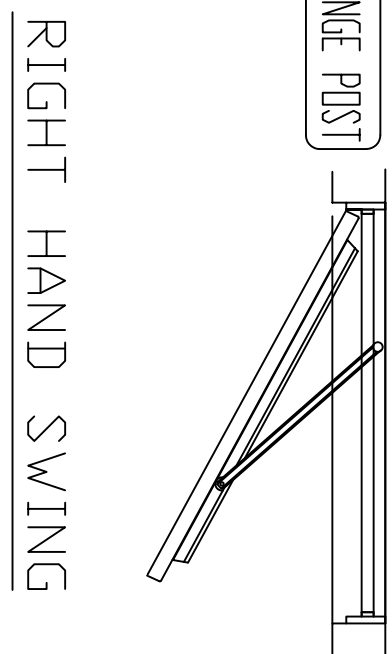
LANDING ENTRANCE SCHEDULE						
#	ENTRANCE DESIGNATION	SWING	ANCHOR TYPE	HALL CALL POS.	LOCK TYPE	COMMENTS
* LEVEL						
* ENTRANCE DESIGNATION						
* SWING						
* ANCHOR TYPE						
* HALL CALL POS.						
* LOCK TYPE						

\* SEE NOTE C FOR LANDING ENTRANCE SCHEDULE

NOTES:  
ADRYWALL OR PARGING (BY OTHERS)AS REQ'D.  
C/SSEE DATASHEET OF THE INSTALLATION DRAWING FOR LANDING ENTRANCE SCHEDULE.  
DUAL INFORMATION IS SUBJECT TO CHANGE. PLEASE REFERENCE OUR ON-LINE DRAWINGS AT [www.concordellevator.com](http://www.concordellevator.com) FOR THE MOST RECENT UPDATES.

GENERAL SPECIFICATIONS:  
- EACH POWERED HEADER SHALL BE SUPPLIED AS A FINISHED ASSEMBLY READY TO INSTALL INTO FRAMING, NOTEWOOD FALSE HEADER MUST BE CUT TO SIZE.  
- DOOR FRAME SHALL BE WOOD CONSTRUCTION WHERE OPERATOR IS MOUNTED  
- DOORS SUPPLIED BY SAVARIA/CONCORD SHALL BE HOLLOW-CORE, 1.375" THICK, SWINGING ON HINGES.  
- OPERATOR COMPONENTS ARE FABRICATED FROM ZINC SATIN-COATED STEEL WITH ZINC RICH PRIMER, OR FACTORY APPLIED POWDER-COAT FINISH WHERE PARTS ARE VISIBLE TO END-USER

HARDWARE:  
PULL HANDLE - SUPPLIED BY OTHERS  
CLOSER/OPENER: CONCORD PRO AUTO III  
LOCK ASSY. \*SEE CHART  
MOUNTING SCREWS PROVIDED  
SHIMS NOT PROVIDED



POWERED HEADER R-H

CUSTOMER:	PROJECT:	DATE:
ADDRESS:	REVISION DATE:	MM/DD/YY
COMPLETED BY:	COMPLETED DATE:	MM/DD/YY
1	1	

SAVARIA CONCORD  
Your Accessibility Partners  
JOB No. JOB NUMBER 1 OF 1

OFFICE USE ONLY:  
CONFIGURATION VERSION STAMP:  
MODULE VERSION STAMP:  
Part No. PRODUCT #  
Version No.